

MILLENNIUM  
POINT



# THE PERFECT HOME FOR YOUR BUSINESS



AFFORDABLE,  
SPACIOUS AND  
FLEXIBLE OFFICE  
SPACES AVAILABLE  
IN BIRMINGHAM  
CITY-CENTRE

[millenniumpoint.org.uk](http://millenniumpoint.org.uk)

# DISCOVER THE PERFECT SETTING FOR YOUR NEXT CHAPTER

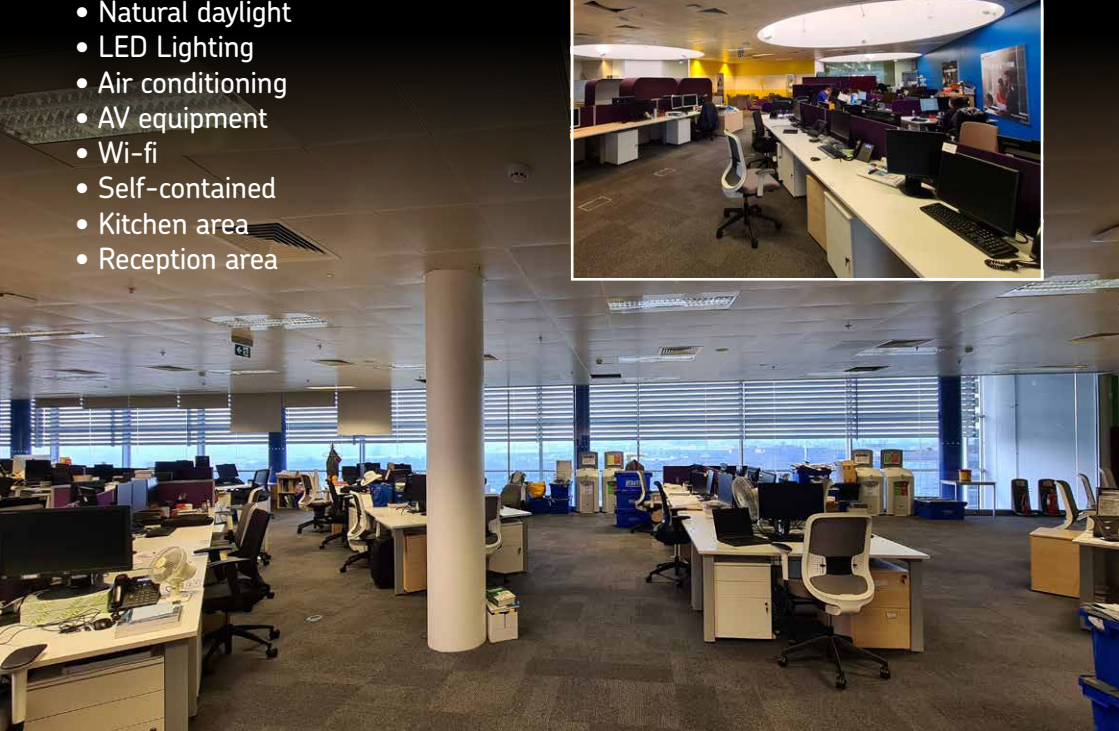
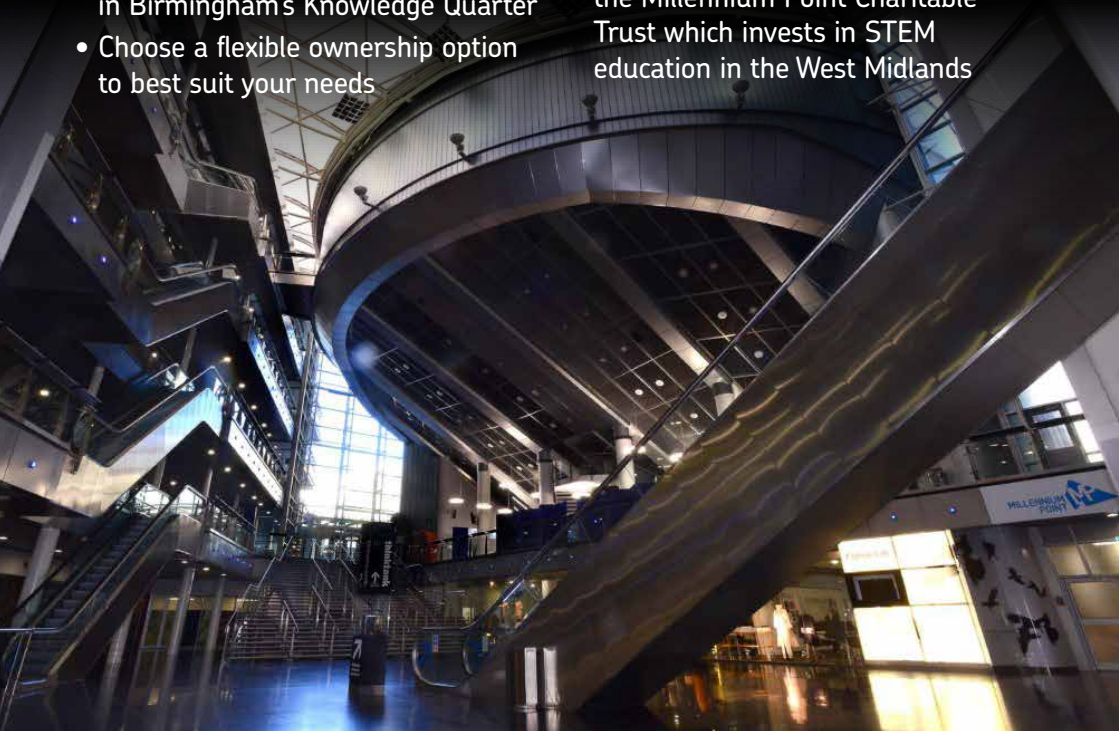
- Choose a flexible ownership option to best suit your needs
- Be at the centre of Birmingham, next to the new Curzon Street Station development and a short walk from all the transport links
- Park in our on-site car park
- Join a thriving community of educators, innovators and creators in Birmingham's Knowledge Quarter
- Choose a flexible ownership option to best suit your needs
- Enjoy support from our friendly on-site staff and 24-hour security team
- Neighbour other exciting tenants including the award-winning Mulino restaurant, Birmingham City University and ThinkTank
- Support the community and the future of science with rent funding the Millennium Point Charitable Trust which invests in STEM education in the West Midlands

## CURZON VIEW

A large, flexible office space on Level 4 with natural daylight and incredible views of Birmingham and our Atrium. This versatile space is equipped for multiple uses, ready to suit your business needs.

This space also comes with kitchen and reception areas, LED lighting, AV equipment and air conditioning.

- Natural daylight
- LED Lighting
- Air conditioning
- AV equipment
- Wi-fi
- Self-contained
- Kitchen area
- Reception area



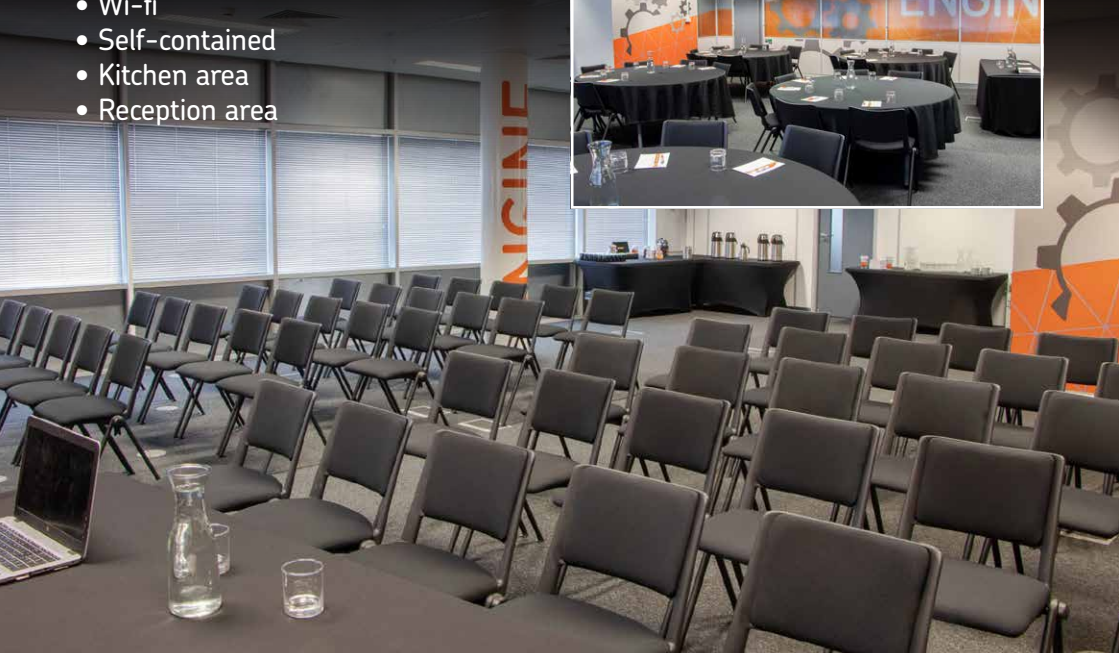
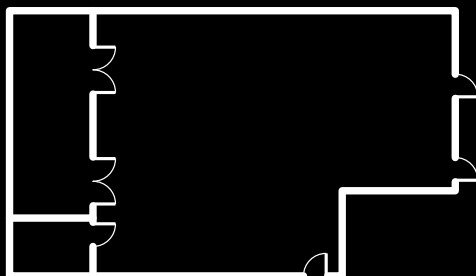
SIZE: 95.0 m<sup>2</sup>

# ENGINE

Located on Level 4, Engine is a more private office space away from the footfall of Millennium Point.

Bright and airy, the room welcomes natural daylight and offers a view out into the city. A kitchen is also connected for the ease of your team.

- Natural daylight
- LED Lighting
- Air conditioning
- AV equipment
- Wi-fi
- Self-contained
- Kitchen area
- Reception area

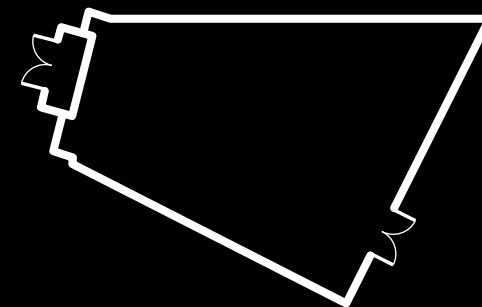


SIZE: 137.1 m<sup>2</sup>

# SHUTTLE

Situated at the heart of our landmark building on Level 3 but away from its busy footfall, Shuttle offers the perfect home for smaller teams.

- LED Lighting
- Air conditioning
- AV equipment
- Wi-fi
- Self-contained



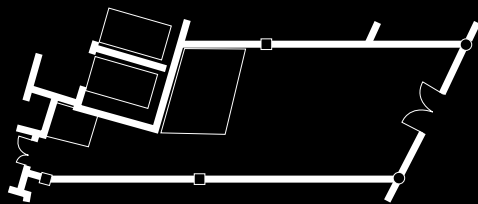
SIZE: 84.0m<sup>2</sup>

# CAB

Situated at the heart of our landmark building on Level 3, Cab offers a quieter space away from the busy footfall.

Alongside the main office, a smaller office for meetings or hosting guests is provided.

- LED Lighting
- Air conditioning
- Wi-fi
- Opportunity to be self-contained



SIZES: 28.76m<sup>2</sup> – 162.69m<sup>2</sup>

# STATION STUDIOS

Station Studios boasts multiple sized rooms, suitable for dance groups, yoga sessions or acting rehearsals. Pick between mirrored or non-mirrored rooms.

Each studio has their own secure storage rooms, away from public footfall.

- LED Lighting
- Air conditioning
- Wi-fi
- Kitchen area
- Reception area
- Mirrored
- Storage Rooms



# HOW TO FIND US



## BY FOOT

Millennium Point is a 10-minute walk from the Bullring.



## BY TRAIN

Less than 1 mile from Moor Street, New Street and Snow Hill Stations.



## BY CAR

Easily accessible from the M6, M5 and M42. Located opposite a multi-storey car park.



Millennium Point  
Curzon Street  
Birmingham B4 7XG

t 0121 202 2200

e [info@millenniumpoint.org.uk](mailto:info@millenniumpoint.org.uk)

w [millenniumpoint.org.uk](http://millenniumpoint.org.uk)